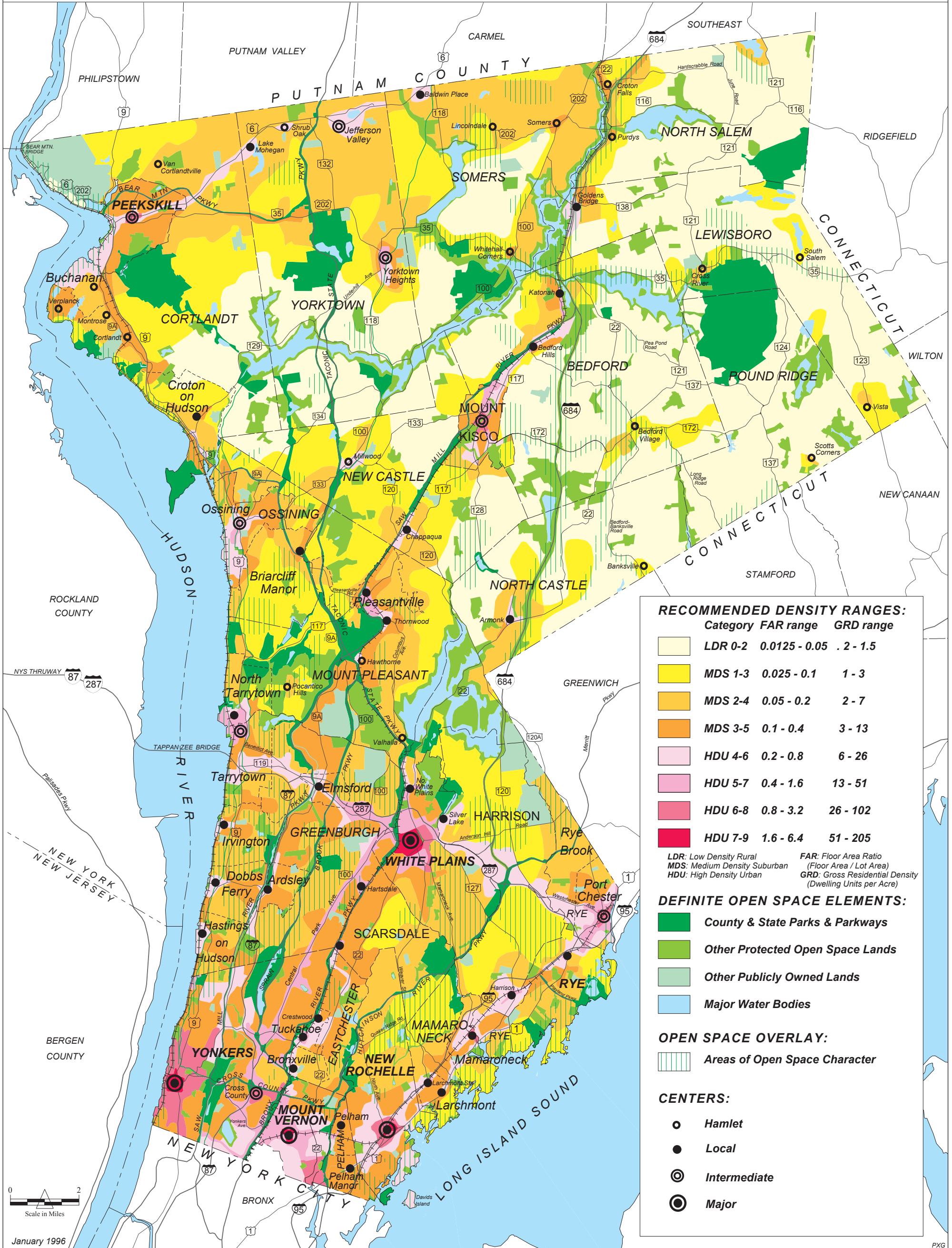


# WESTCHESTER COUNTY, NEW YORK



**RECOMMENDED DENSITY RANGES:**

Category	FAR range	GRD range
LDR 0-2	0.0125 - 0.05	.2 - 1.5
MDS 1-3	0.025 - 0.1	1 - 3
MDS 2-4	0.05 - 0.2	2 - 7
MDS 3-5	0.1 - 0.4	3 - 13
HDU 4-6	0.2 - 0.8	6 - 26
HDU 5-7	0.4 - 1.6	13 - 51
HDU 6-8	0.8 - 3.2	26 - 102
HDU 7-9	1.6 - 6.4	51 - 205

**LDR:** Low Density Rural  
**MDS:** Medium Density Suburban  
**HDU:** High Density Urban

**FAR:** Floor Area Ratio (Floor Area / Lot Area)  
**GRD:** Gross Residential Density (Dwelling Units per Acre)

**DEFINITE OPEN SPACE ELEMENTS:**

- County & State Parks & Parkways
- Other Protected Open Space Lands
- Other Publicly Owned Lands
- Major Water Bodies

**OPEN SPACE OVERLAY:**

- Areas of Open Space Character

**CENTERS:**

- Hamlet
- Local
- Intermediate
- Major